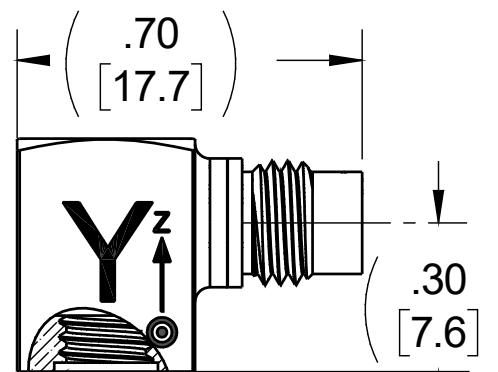
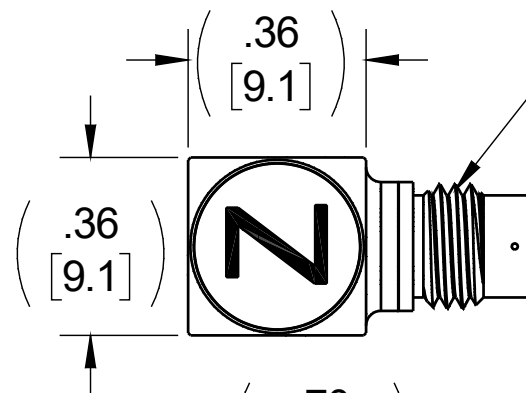
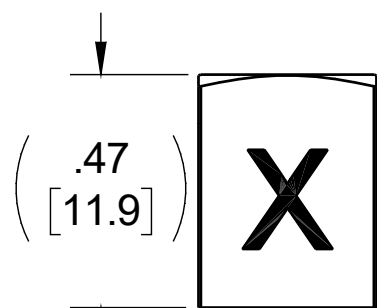
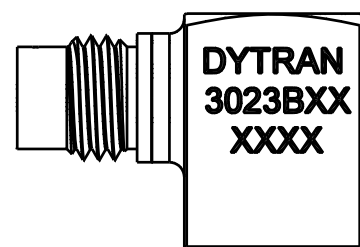


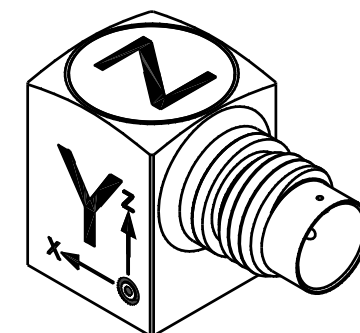
THE INFORMATION CONTAINED IN THIS DRAWING IS THE SOLE PROPERTY OF DYTRAN INSTRUMENTS INC. ANY REPRODUCTION IN PART OR AS A WHOLE WITHOUT THE WRITTEN PERMISSION OF DYTRAN INSTRUMENTS INC. IS PROHIBITED

VARIATION TABLE		
MODEL NO.	SENSITIVITY	TEDS
3023B7	1 mV/g	NO
3023B8	5 mV/g	NO
3023B9	10 mV/g	NO
3023B7T	1 mV/g	YES
3023B8T	5 mV/g	YES
3023B9T	10 mV/g	YES

REVISIONS					
REV	ECN	DESCRIPTION	BY/DATE	CHK	APPR
B	16747	ZONE 3/B: IS: .21, WAS: .14	AS 06/01/22	JB	AM



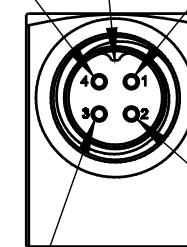
1/4-28 4-PIN CONNECTOR



PIN 4
X AXIS
(1) OUTPUT

KEY

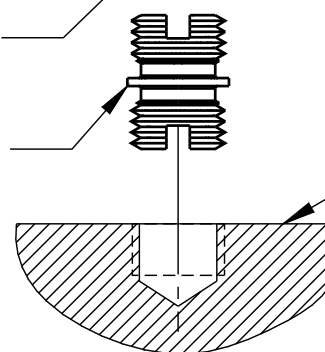
PIN 1
GND



PIN 2
Y AXIS
(2) OUTPUT

PIN 3
Z AXIS
(3) OUTPUT

10-32 UNF-2B ∇ .12
[.21] ∇ .02



MOUNTING RECOMMENDATIONS:
PREPARE SURFACE AT LEAST ϕ .39 [7.5]
FLAT TO .001 TIR.
TAP 10-32 UNF-2B ∇ .140 [3.6] MIN.
MOUNTING TORQUE: 10-12 Lb-in.

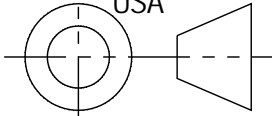
7 MODEL 6200, 10-32 UNF-2A MOUNTING STUD, SUPPLIED

6 MATES WITH DYTRAN 6811AXX OR 6824AXX CABLE
(XX=LENGTH IN FEET)

1. MATERIAL: TITANIUM ALLOY
2. ARROWS INDICATE ACCELERATION DIRECTION FOR POSITIVE OUTPUT
3. WEIGHT: 4 GRAMS MAX.
4. SENSITIVITY: SEE CHART.
5. OPERATIONAL TEMPERATURE: RANGE -60° TO +325°F

NOTES: UNLESS OTHERWISE SPECIFIED.

3023B7		UNLESS OTHERWISE SPECIFIED: INTERPRET DIM & TOL PER ASME Y14.5M - 1994. REMOVE BURRS. COUNTERSINK INTERNAL THDS 90° TO MAJOR DIA. CHAM EXT THDS 45° TO MINOR DIA. THD LENGTHS AND DEPTHS ARE FOR MIN FULL THDS. THDS PER MIL-S-7742. DIMENSIONS APPLY AFTER FINISHING.
3023B8		
3023B9		
3023B7T		
3023B8T		
3023B9T		ALL MACHINED SURFACES. TOTAL RUNOUT WITHIN .005. BREAK SHARP EDGES .005 TO .010. MACHINED FILLET RADII .005 TO .015. WELDING SYMBOLS PER AWS A2.4. ABBREVIATIONS PER MIL-STD-12.
USED ON	NEXT ASSY	
APPLICATION		63/✓
THIRD ANGLE PROJECTION USA		



CONTRACT NO.



Chatsworth, CA

TITLE:

OUTLINE/INSTALLATION
DRAWING, MODEL 3023B SERIES

APPROVALS		DATE
ORIG	NDC	NDC3/11/14
CHK	EP	05/02/16
APP	RT	05/04/16
APP		

SIZE	CAGE CODE	DWG. NO.	REV
A	2W033	127-3023B7	B
SCALE: NONE		SOLIDWORKS	SHEET 1 OF 1

