

D

C

B

A

PROPRIETARY AND CONFIDENTIAL

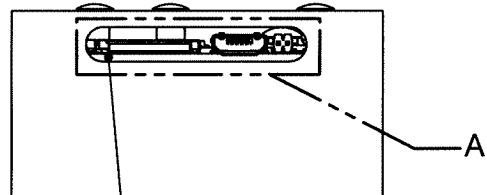
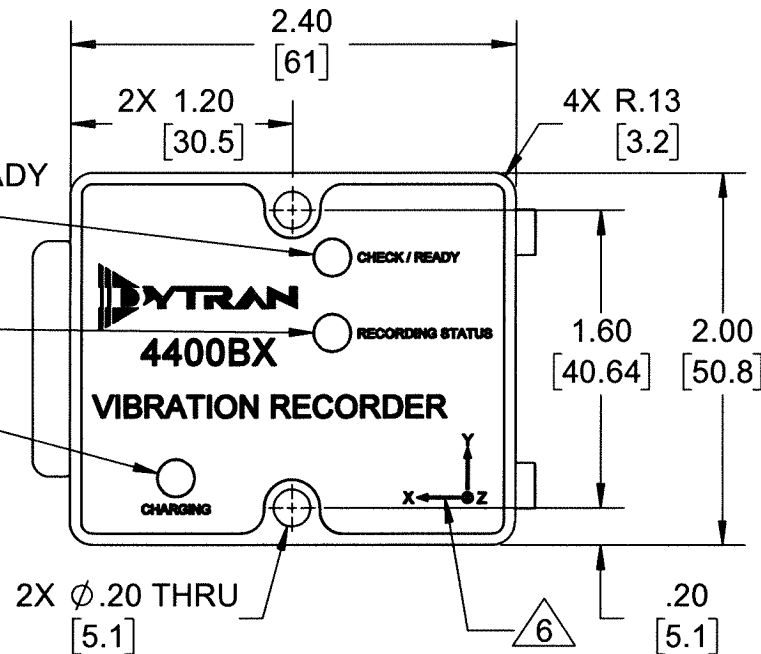
THE INFORMATION CONTAINED IN THIS DRAWING IS THE SOLE PROPERTY OF DYTRAN INSTRUMENTS INC. ANY REPRODUCTION IN PART OR AS A WHOLE WITHOUT THE WRITTEN PERMISSION OF DYTRAN INSTRUMENTS INC. IS PROHIBITED

MODEL	RANGE
4400B1	±2g
4400B2	±19g
4400B3	±200g

HARDWARE CHECK / READY
INDICATOR LED

RECORDING
INDICATOR LED

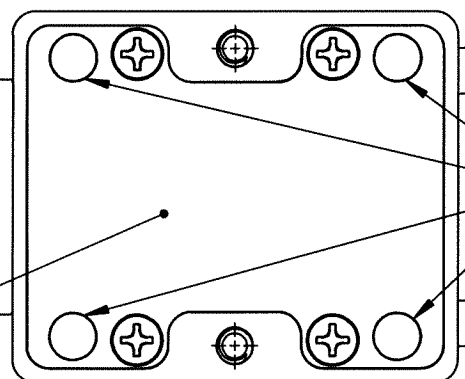
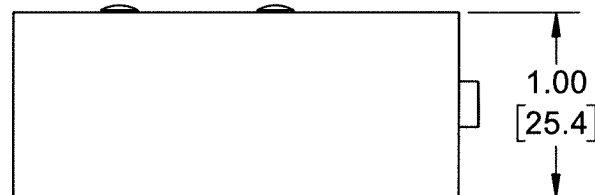
CHARGING
INDICATOR LED



MOLDED COVER
NOT SHOWN FOR CLARITY

MOLDED COVER

8 BOTTOM COVER,
REMOVABLE



RARE EARTH MAGNETS,
PERMANENTLY INSTALLED 5

POWER
BUTTON

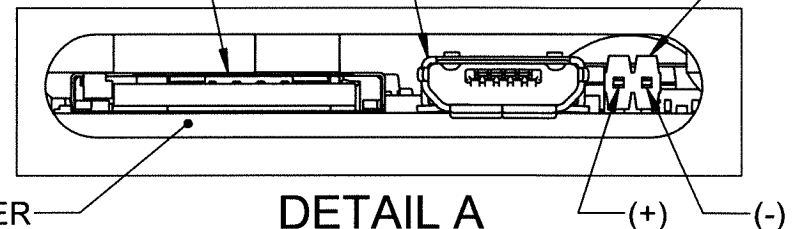
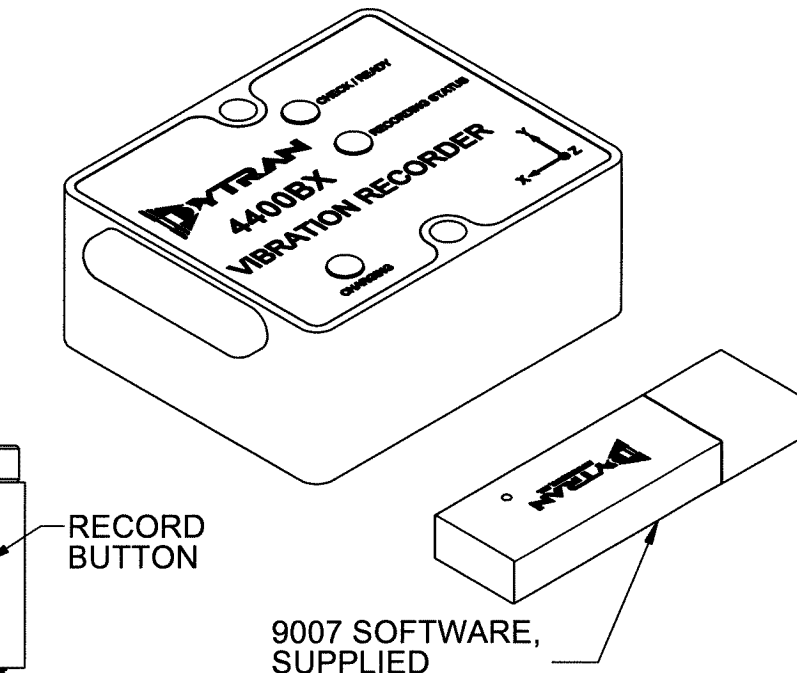
RECORD
BUTTON

RECORD
BUTTON

BATTERY CHARGING
PORT, MICRO-USB

MICRO-SD
CARD SLOT

7 SYNCHRONIZATION
CONNECTOR



DETAIL A
SCALE 3 : 1

8 MOLDED COVER
NOT SHOWN FOR CLARITY

- 8 MOLDED COVER AND BOTTOM COVER MUST BE INSTALLED TO MEET IP RATING.
- 7 MATING SYNCHRONIZATION CABLE: DYTRAN MODEL 60153AXX.
- 6 ARROWS INDICATE DIRECTIONS OF ACCELERATION FOR POSITIVE OUTPUT.
- 5 MAGNETS PULL RATING: UP TO 8.4 lb.
NOTE: MAXIMUM PULL RATINGS ARE BASED ON DIRECT CONTACT WITH RUST-FREE AND UNPAINTED IRON PLATE. VARIATIONS IN MATERIAL CONDITION WILL SIGNIFICANTLY REDUCE THESE RATINGS.
- 4 MOUNTING SCREW, MODEL 6246, 10-32 UNF-3A X 1.25, QTY 2, SUPPLIED.
MOUNTING SCREW, MODEL 6694A1, M5 X 0.8 X 35mm, QTY 2, SUPPLIED.
3. OPERATING TEMPERATURE, DISCHARGING: -4°F TO +140°F (-20°C TO +60°C)
OPERATING TEMPERATURE, CHARGING: +32°F TO +113°F (0°C TO +45°C)
2. HOUSING MATERIAL: ALUMINUM ALLOY, ANODIZED, COLOR: BLUE.
1. WEIGHT: 150 GRAMS, MAX.

NOTES: UNLESS OTHERWISE SPECIFIED

DWG NO 127-4400B SH 1 REV A

2

1

REVISIONS

REV.	ECN	DESCRIPTION	BY/DATE	CHK	APPR
A	15327	INITIAL RELEASE	KG 02/17/20	AM	

D

C

B


A

UNLESS OTHERWISE SPECIFIED:
INTERPRET DIM & TOL PER
ASME Y14.5M - 1994.
REMOVE BURRS.
COUNTERSINK INTERNAL THDS
90° TO MAJOR DIA.
CHAM EXT THDS 45° TO MINOR DIA.
THD LENGTHS AND DEPTHS ARE FOR
MIN FULL THDS.
DIMENSIONS APPLY AFTER FINISHING.

ALL MACHINED SURFACES: 63/
TOTAL RUNOUT WITHIN .005.
BREAK SHARP EDGES .005 TO .010.
MACHINED FILLET RADII .005 TO .015.
WELDING SYMBOLS PER AWS A2.4.
ABBREVIATIONS PER MIL-STD-12.

UNLESS OTHERWISE SPECIFIED:
DIMENSIONS ARE IN INCHES.
DIMENSIONS IN BRACKETS [] ARE IN
MILLIMETERS TOLERANCES ARE:

DECIMALS	METRIC	ANGLES
.XX ± .03	X ± 0.8	ANGLES ± 1°
.XXX ± .010	.XX ± 0.25	
APPROVALS		DATE
ORIG	KG	10/18/19
CHK	AM	03/12/20
APP		5/12/20
DO NOT SCALE DRAWING		THIRD ANGLE PROJECTION USA

 DYTRAN INSTRUMENTS, INC.		Chatsworth, CA		MASTER ONLY IF IN RED	
TITLE: OUTLINE/INSTALLATION DWG, VIBRATION RECORDER, MODEL 4400B					
SIZE B	CAGE CODE 2W033	DWG NO 127-4400B		REV A	
SCALE: 1:1				SHEET 1 OF 1	

MODEL NUMBER

4400B2