

Terms and Conditions of Use

This drawing, including all information depicted herein (collectively, “Drawing”), is FUTEK’s property and protected under applicable law, including copyright. FUTEK reserves all rights. The Drawing is provided solely for your information and exclusive use. **Except as expressly approved by FUTEK in writing, you may not reproduce or share this Drawing**, in whole or part, with any other firm or individual, or attempt to reverse engineer the Drawing or data contained therein. Any reproduction of this Drawing in whole or part must include this legend.

By accessing the Drawing, you agree that you have read, understand, and agree to abide by the stated Terms and Conditions of Use.

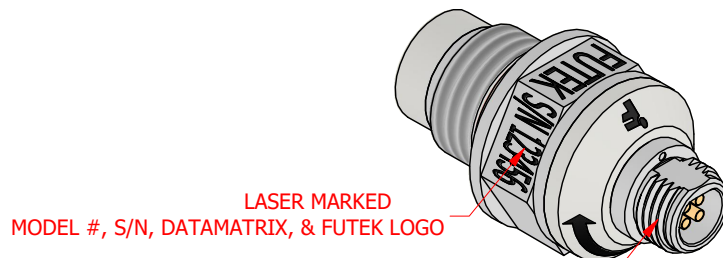
© 2023 FUTEK Advanced Sensor Technology, Inc.

FUTEK MODEL PFT511

ITEM NUMBER: SEE CHART

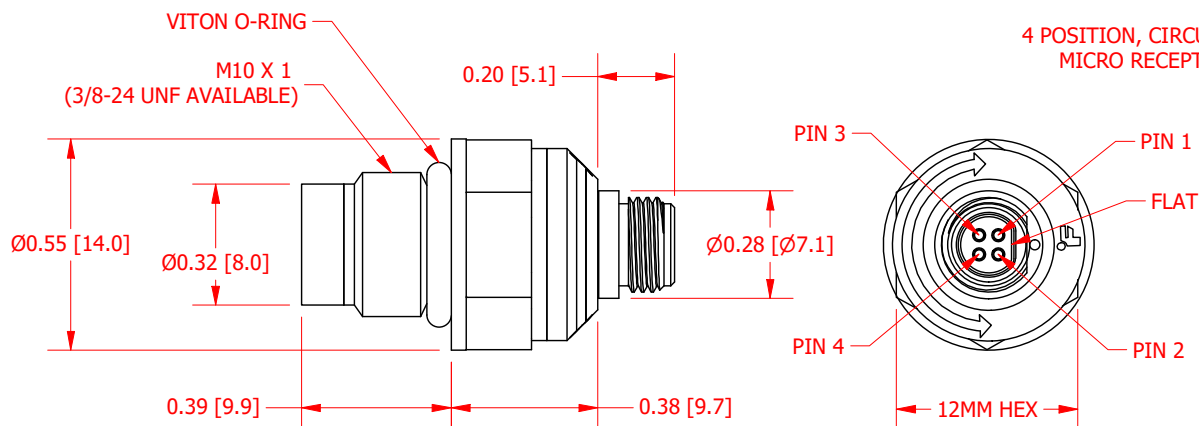
MICRO FLUSH MOUNT IP67 PRESSURE SENSOR

INCH [mm]		R.O.= Rated Output	
WIRING CODE			
- Excitation	+ Excitation	+ Signal	- Signal
PIN 1	PIN 2	PIN 3	PIN 4



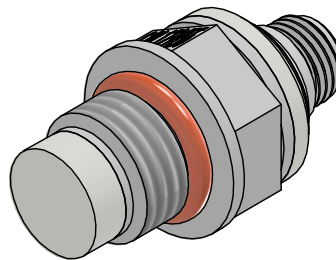
LASER MARKED
MODEL #, S/N, DATAMATRIX, & FUTEK LOGO

4 POSITION, CIRCULAR
MICRO RECEPTACLE



SPECIFICATIONS:

RATED OUTPUT	SEE CHART
CAPACITY	SEE CHART
SAFE OVERLOAD	150 % of R.O.
ZERO BALANCE	±3% of R.O.
EXCITATION (VDC OR VAC)	7 MAX
BRIDGE RESISTANCE	350 Ω nom
NONLINEARITY	±0.8% of R.O.
HYSTERESIS	±0.4% of R.O.
NONREPEATABILITY	±0.02% of R.O.
TEMP. SHIFT ZERO	±0.02% of R.O./°F (±0.036 of R.O./°C)
TEMP. SHIFT SPAN	±0.02% of LOAD/°F (±0.036 of LOAD/°C)
COMPENSATED TEMP.	32 to 140 °F (0 to 60 °C)
OPERATING TEMP	-40 to 194 °F (-40 to 90 °C)
WEIGHT (approx)	0.02 lb [10 g]
MATERIAL	17-4 PH.S.S.
IP RATING	IP67



ITEM #	CAPACITY	RATED OUTPUT (mV/V)
FSH04761	225 PSI	1.5
FSH04762	750 PSI	2
FSH04763	3000 PSI	2
FSH04764	7500 PSI	2
FSH04765	10000 PSI	2

CUSTOMER APPROVAL- COMPANY:

CUSTOMER APPROVAL- NAME / DATE:

REVISIONS: (Refer to dwg # revision sheet)

OUTLINE DRAWING

STANDARD NOTES: (Unless Otherwise Specified)

ALL DIMENSIONS ARE IN INCHES

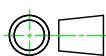
DRAWING INTERPRETATION DIMS. PER ASME-Y14.5

REMOVE BURRS AND BREAK SHARP EDGES .005 - .015

THREADS PER HANDBOOK H-28

DIMENSIONS ARE SHOWN AFTER PLATING

3rd ANGLE PROJ.



ANGLE:
± 1/2°

CHAMFER:
± 5°

TOLERANCE:
.X ± 0.1"
.XX ± 0.01"
.XXX ± 0.005"

FUTEK

This drawing, including all information depicted herein (collectively, "Drawing"), is FUTEK's property and protected under applicable law, including copyright. FUTEK reserves all rights. The Drawing is provided solely for your information and exclusive use. Except as expressly approved by FUTEK in writing, you may not reproduce or share this Drawing in whole or part with any other firm or individual, or attempt to reverse engineer the Drawing or data contained therein. Any reproduction of this Drawing in whole or part must include this legend.

MODEL: **PFT511**

DRAWN BY: S. VOSOUGH

APPROVED BY: M. ILLES

CHECKED BY:

DWG No.: **F01585-0**

CREATED DATE: 11/24/2022

APPROVED DATE: 11/16/2022

CAGE: 1X8M6 SHEET: 1 OF 1