

PROPRIETARY AND CONFIDENTIAL

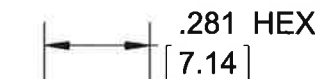
THE INFORMATION CONTAINED IN THIS DRAWING IS THE SOLE PROPERTY OF DYTRAN INSTRUMENTS INC. ANY REPRODUCTION IN PART OR AS A WHOLE WITHOUT THE WRITTEN PERMISSION OF DYTRAN INSTRUMENTS INC. IS PROHIBITED

1 CABLE LENGTH TOLERANCE

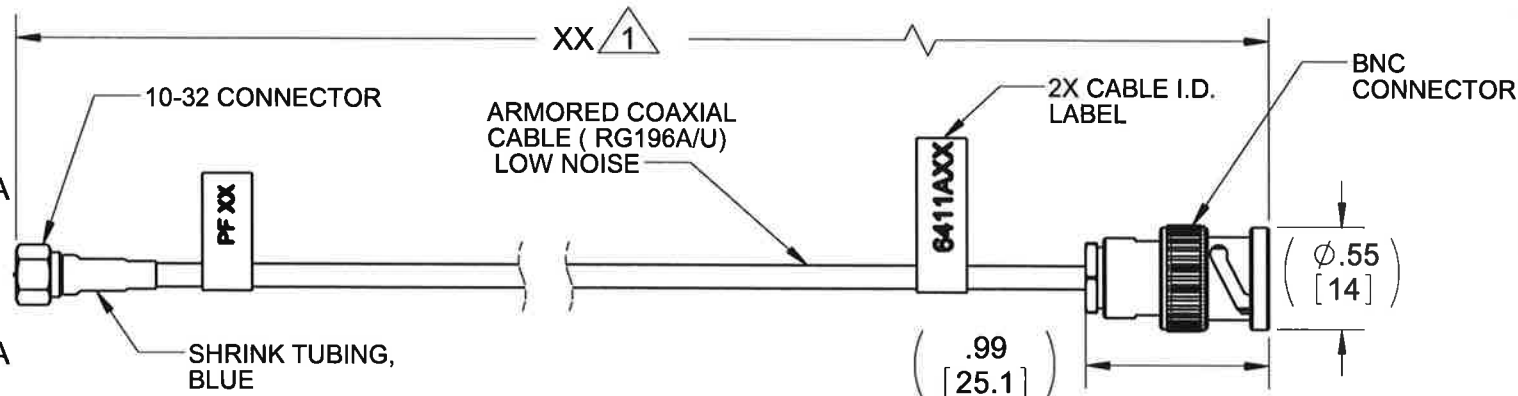
≤1 FT	+1/ -0 IN
>1 FT - 5 FT	+2/ -0 IN
> 5 FT - 10 FT	+4/ -0 IN
>10 FT - 25 FT	+6 / -0 IN
>25 FT	+5% / -0%

REVISIONS

REV	ECN	DESCRIPTION	BY/DATE	CHK	APPR
C	8671	ADDED PULL STRENGTH, I.R., NOISE SPECS	LN, 05/23/12	JS	DV
D	12283	ADDED FRONT VIEW OF 10-32 HEX CONNECTOR.	LN 10/16/15	<i>JS</i>	AS



**VIEW A-A
SCALE 2 : 1**



3. PULL STRENGTH, MAX:
-BNC CONNECTOR: 60 LB DEAD WEIGHT
-10-32 CONNECTOR: 85 LB DEAD WEIGHT

2. INSULATION RESISTANCE: >20 TERA-OHMS
IMPEDANCE: 52 OHMS
CAPACITANCE (NOM.) : 27 pF/FT
NOISE: .005 pC/g FT
BEND RADIUS: 1.00 MIN

- 1** THE LENGTH OF THE CABLE ASSEMBLY IS DESIGNATED BY THE XX IN THE NUMBER (6411XX). XX EQUALS THE CABLE LENGTH IN FEET. (I.E. 6411A10 IS A 10 FT LENGTH CABLE ASSEMBLY)

NOTES: UNLESS OTHERWISE SPECIFIED

SINGLE CONDUCTOR LOW NOISE CABLE	
AWG	30-7/38 NICKEL PLATED COPPER
TEMP	200 °C WIRE RATED
VOLTAGE	600 VOLTS
CONDUCTOR INSULATION	EXTRUDED PTFE, CLEAR, Ø.032 NOM.
LOW NOISE WRAP #1 & #2	CARBON TAPE
INNER SHIELD	38 AWG SILVER PLATED COPPER BRAID, 85% MIN COVERAGE, Ø.050 NOM
OUTER SHIELD	38AWG SPC BRAID 85% MIN COVERAGE
JACKET	CLEAR TFE WRAP
DIAMETER	Ø.125 NOM.

CONTRACT NO.



TITLE:
**OUTLINE/INSTALLATION DRAWING,
6124B TO BNC, MODEL 6411A**

UNLESS OTHERWISE SPECIFIED: INTERPRET DIM & TOL PER ASME Y14.5M - 1994. REMOVE BURRS. COUNTERSINK INTERNAL THDS 90° TO MAJOR DIA. CHAM EXT THDS 45° TO MINOR DIA. THD LENGTHS AND DEPTHS ARE FOR MIN FULL THDS. THDS PER MIL-S-7742. DIMENSIONS APPLY AFTER FINISHING.	
USED ON	NEXT ASSY
APPLICATION	
THIRD ANGLE PROJECTION USA	
ALL MACHINED SURFACES. TOTAL RUNOUT WITHIN .005. BREAK SHARP EDGES .005 TO .010. MACHINED FILLET RADII .005 TO .015. WELDING SYMBOLS PER AWS A2.4. ABBREVIATIONS PER MIL-STD-12.	

UNLESS OTHERWISE SPECIFIED: DIMENSIONS ARE IN INCHES. DIMENSIONS IN BRACKETS [] ARE IN MILLIMETERS TOLERANCES ARE: INCHES METRIC ANGLES .XX ± .03 .X ± 0.8 ± 1° .XXX ± .010 .XX ± 0.25	
MATERIAL	
FINISH	
DO NOT SCALE DRAWING	

APPROVALS		DATE
ORIG	NC	7/18/02
CHK	JS	11/23/10
APP	DV	11/23/10
APP		

SIZE A	CAGE CODE 2W033	DWG. NO. 127-6411A	REV D
SCALE: NONE		SOLIDWORKS	SHEET 1 OF 1