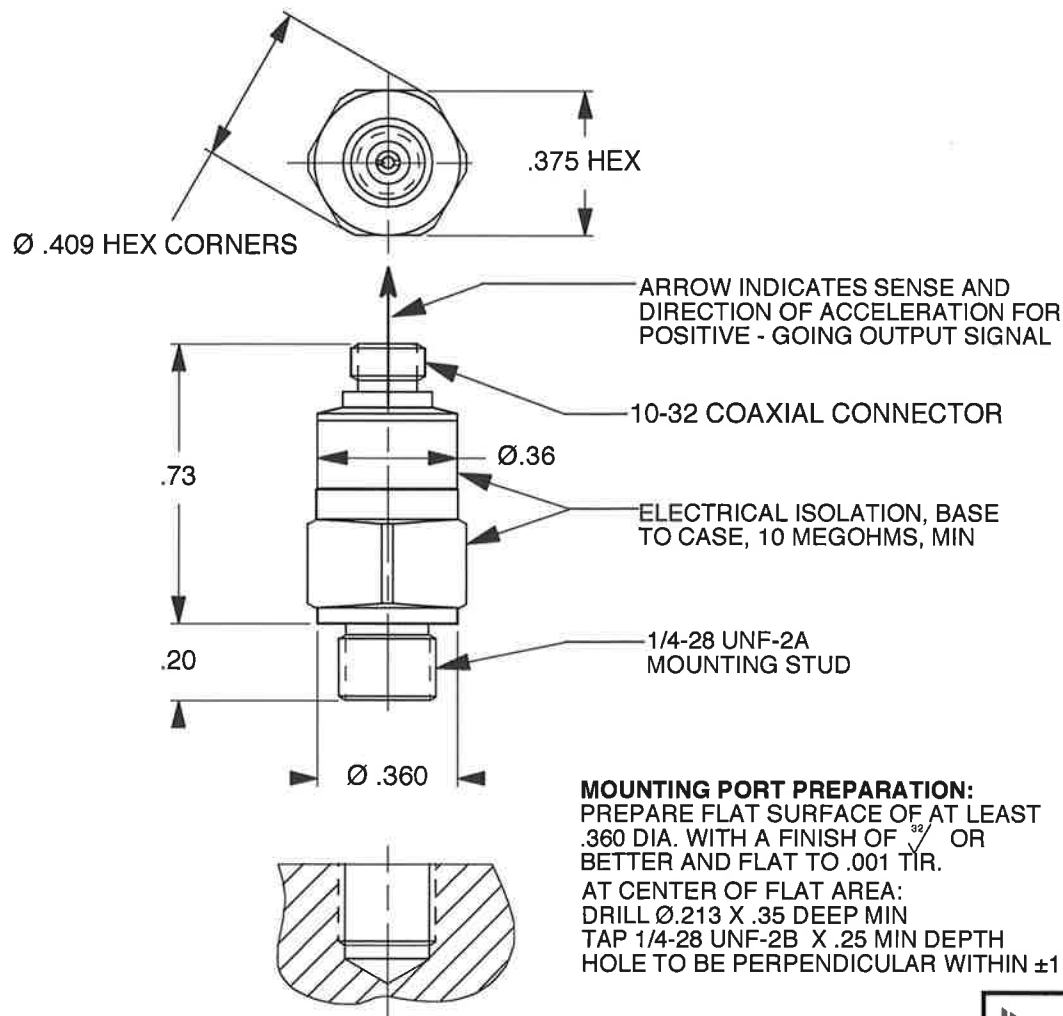



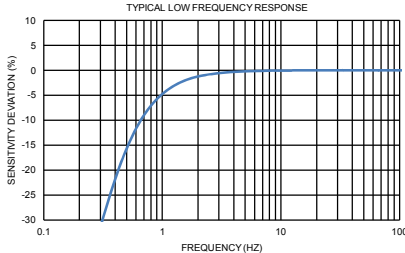
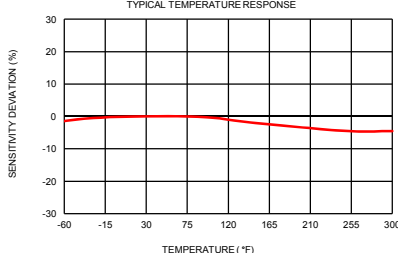
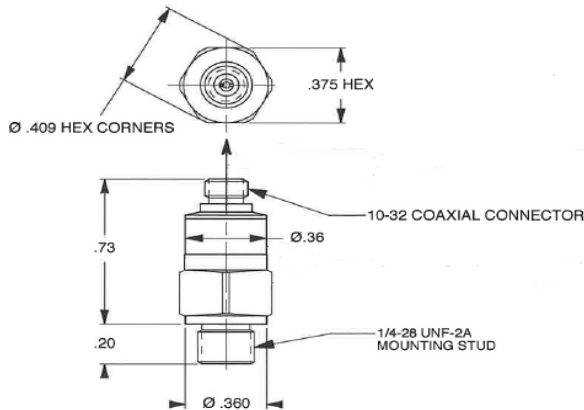
DYTRAN PROPRIETARY AND CONFIDENTIAL
 THE INFORMATION CONTAINED IN THIS DRAWING IS THE SOLE PROPERTY OF
 DYTRAN INSTRUMENTS, INC. AND ANY REPRODUCTION IN PART OR AS A
 WHOLE OR ANY OTHER DISSEMINATION OF THIS INFORMATION WITHOUT THE
 WRITTEN PERMISSION OF DYTRAN INSTRUMENTS, INC. IS PROHIBITED.


REV	ECN	DESCRIPTION	BY/DATE	CHK	APPR
A	10476	REMOVED WELD GROOVES	NC/11-5-13	EM	W



3. MATERIAL: 300 SERIES STAINLESS STEEL.
2. WEIGHT: 8 GRAMS.
1. RECOMMENDED MOUNTING TORQUE ON 3/8 IN.
 HEX: 20 TO 25 LB.-INCHES.

DYTRAN INSTRUMENTS, INC.		MASTER ONLY IF IN RED		CHATSWORTH, CA.	
SCALE 2X	DESIGN N.C.	DATE 6/2/98			
DRAWN N.C.	DATE 6/2/98	PART NO. MODEL 3019A			
CHECKED R.A.	DATE 6/2/98	MAT'L			
APPROVED W	DATE 6/2/98	NEXT ASSEMBLY	USED ON 3019A	REV A	
TITLE OUTLINE/INSTALLATION DRAWING, HIGH FREQUENCY ACCELEROMETER MODEL 3019A			DWG NO. 127-3019A		
SHEET 1 OF 1					

Model Number 3019A		PERFORMANCE SPECIFICATION				DOC NO PS3019A	
		MINIATURE IEPE ACCELEROMETER				REV A, ECN 10588, 12/04/13	
		<ul style="list-style-type: none">• MINIATURE SIZE• EXCELLENT LINEARITY• HERMETICALLY SEALED					
		Please refer to the performance specifications of the products in this family for detailed description					
		<u>Supplied Accessories:</u> 1) Accredited calibration certificate (ISO 17025)					
		<u>Notes:</u> [1] Measure at 100Hz, 1 grms per ISA RP 37.2 [2] Measure using zero-based straight line method, % of F.S. or any lesser range. [3] Do not apply power to this system without current limiting, 20 mA MAX. To do so will destroy the IC charge amplifier.					
		 					
PHYSICAL Weight Size Connector Mounting Provision Material Element Style Accelerometer and Connector		ENGLISH		SI			
		0.3 0.375 x 0.73 10-32 Micro Coax 1/4-28 X .20 Long 300 SS Quartz		oz Inches	8 9.5 x 18.5 10-32 Micro Coax 1/4-28 X .20 Long 300 SS Quartz		grams mm
		10 ±500 1 to 10000 .3 to 15000 >50 0.007 ± 2% 5 0.003		mV/g g Hz Hz kHz grms % F.S. g/μe	1 ±4905 1 to 10000 .3 to 15000 >50 0.0687 ± 2% 5 0.03		mV/m/s ² m/s ² Hz Hz kHz m/s ² rms % F.S. m/s ² /μe
		±1000 ±3000 -60 to +300 Welded/Glass To Metal		gpeak gpeak °F	±9810 ±29430 -51 to +149 Welded/Glass To Metal		m/s ² peak m/s ² peak °C
		2 to 20 + 18 to +30 100 +7.5 to +9.5 0.5 to 1.0 10 Positive		mA Volts Ω VDC Sec MΩ	2 to 20 + 18 to +30 100 +7.5 to +9.5 0.5 to 1.0 10 Positive		mA Volts Ω VDC Sec MΩ
ENVIRONMENTAL Maximum Vibration Maximum Shock Temperature Range Seal, Hermetic ELECTRICAL Supply Current Range [3] Compliance Voltage Range Output Impedance, Typ Bias Voltage Discharge Time Constant Electrical Isolation, Min. Output Signal Polarity for Acceleration Toward Top							
		Units on the line drawing are in inches, units in brackets are in millimeters. Refer to 127-3019A for more information.					



21592 Marilla Street, Chatsworth, California 91311 Phone: 818.700.7818 Fax:818.700.7880 www.dytran.com
For permission to reprint this content, please contact info@dytran.com

This family also includes:

Model	Sensitivity (mV/g)	Frequency Response (Hz)	Time Constant (Sec)	Operating Temp (°F)

Please refer to the performance specifications of the products in this family for detailed description

Supplied Accessories:

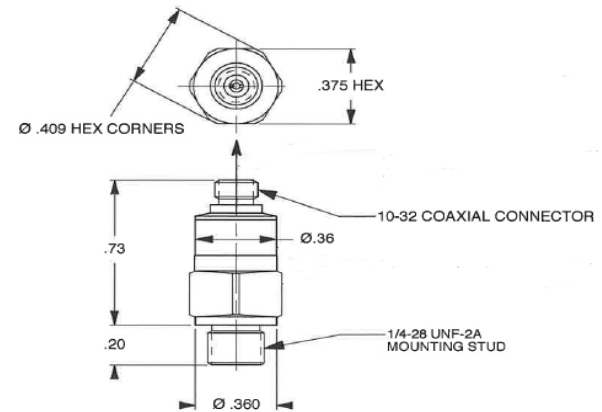
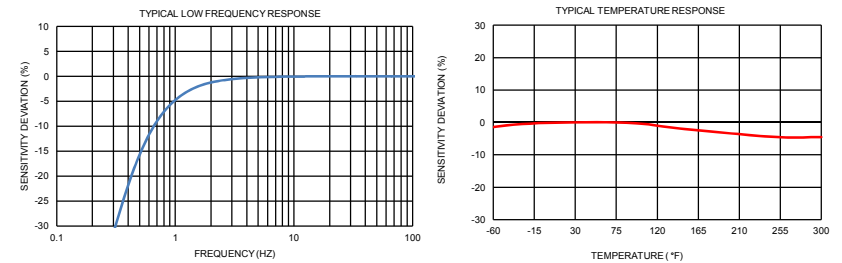
1) Accredited calibration certificate (ISO 17025)

Notes:

[1] Measure at 100Hz, 1 grms per ISA RP 37.2

[2] Measure using zero-based straight line method, % of F.S. or any lesser range.

[3] Do not apply power to this system without current limiting, 20 mA MAX. To do so will destroy the IC charge amplifier.



Units on the line drawing are in inches, units in brackets are in millimeters. Refer to 127-3019A for more information.



21592 Marilla Street, Chatsworth, California 91311 Phone: 818.700.7818 Fax: 818.700.7880 www.dytran.com
For permission to reprint this content, please contact info@dytran.com